

Tobacco Retailer Density in Fort Worth

Retailer Fast Facts

- Fort Worth has **918 tobacco retailers**, **30 times more** retailers than McDonald's restaurants and **21 times more** than Starbucks.



918



31



43



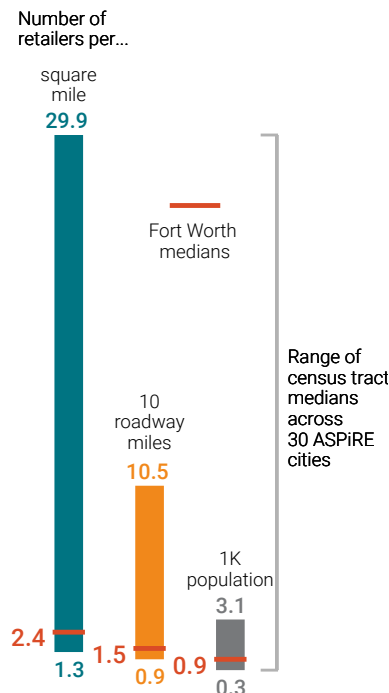
- 42.0% of tobacco retailers are within 500 feet of another tobacco retailer** (~1 city block); **average distance** between a tobacco retailer and its nearest competitor is **1,181 feet** (~2 city blocks).

Density Described

We can measure the density of tobacco retailers in several ways. Here, we compare three popular density measures (**square mile**, **10 roadway miles**, and **1K population**). Find the one that resonates best with you, your community, and other stakeholders.

Depending on the denominator—retailers per square mile, roadway miles, or population—density measures can look very different.

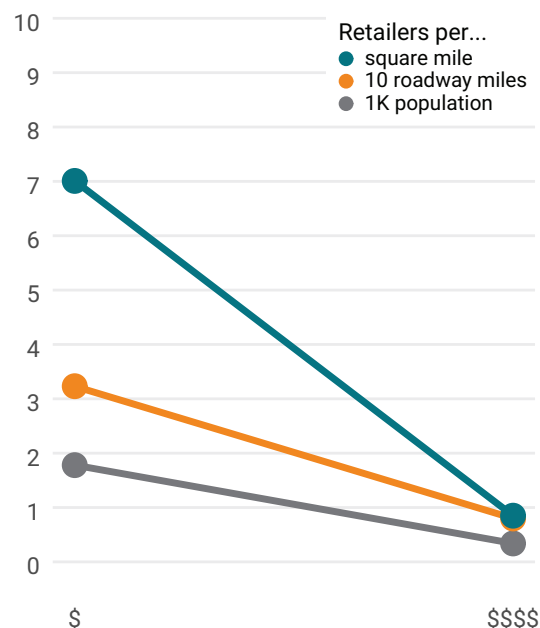
For each measure, we gathered data at the census tract level and **found the median** for all 30 ASPIRE CAB cities. See where your city falls.



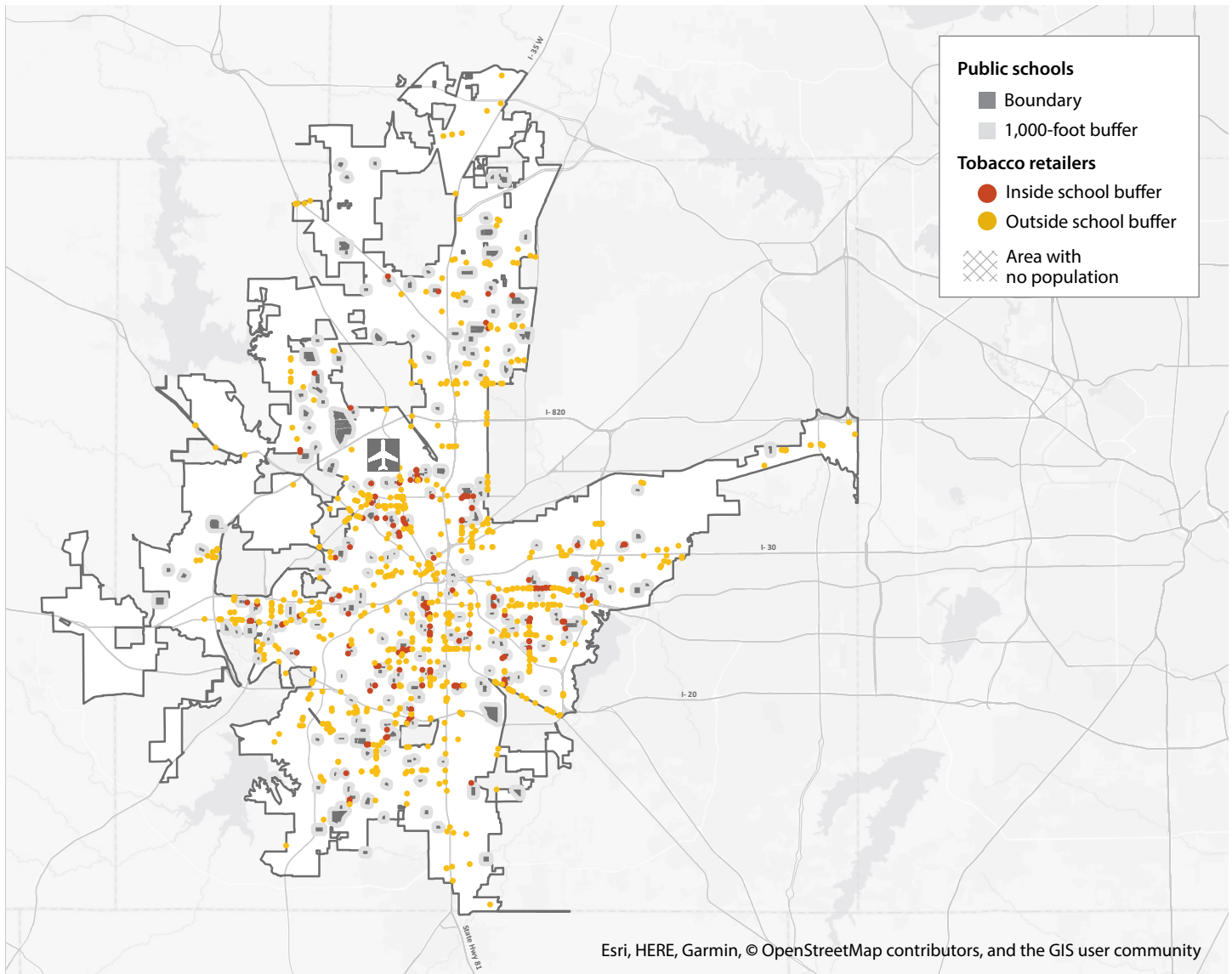
Density & Income Disparity

Lower-income neighborhoods (census tracts) typically have higher tobacco retailer density than higher-income neighborhoods. Sometimes this depends on which measure of density is used.

Here is the median tobacco retailer density for tracts with the lowest and highest quartiles of household income in **Fort Worth**:



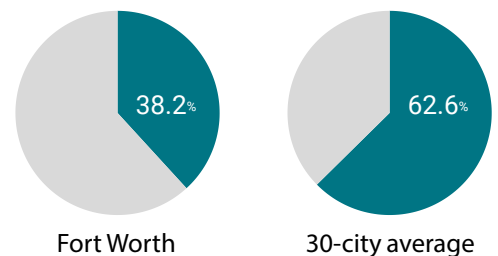
Tobacco Retailers & Schools in Fort Worth



The Fort Worth map illustrates that:

- **38.2% of public schools** are within 1,000 ft of a tobacco retailer
- **18.5% of tobacco retailers** are within 1,000 ft of a school

Fort Worth has fewer schools near tobacco retailers than the 30-city average



About these data: State licensing identified cigarette and tobacco retailers (State of Texas, Comptroller of Public Accounts, Aug, 2019). McDonald's and Starbucks obtained from AggData (2020). City block length estimated to be 540 feet, the average for 19 of 30 cities with block size data. For census tracts, land area and roadway miles were obtained from TIGER/Line Shapefiles (machine-readable data files) prepared by the U.S. Census Bureau, 2019 (<https://www.census.gov/cgi-bin/geo/shapefiles/index.php>); population size and median household income obtained from American Community Survey (2013-2017). School boundary shape files were created by GreenInfo Network. ESRI ArcGIS 10.6.1 used for geocoding and maps. Suggested citation: Tobacco Retailer Density Fact Sheet for Fort Worth, TX (May, 2020), Advancing Science & Practice in the Retail Environment (ASPiRE, aspirecenter.org), funded by the National Cancer Institute #P01-CA225597.

One in six US adults lives in one of the **30 ASPiRE Community Advisory Board (CAB) cities**. The cities vary with respect to state/local tobacco control policies and region. Products like this provide the 30 cities with readily usable snapshots of information on the consumer and built environments for tobacco in their cities and in comparison to the other cities. CAB representatives can use these products in communications with staff, policymakers, and other stakeholders.



**Advancing Science
& Practice in the
Retail Environment**

aspirecenter.org