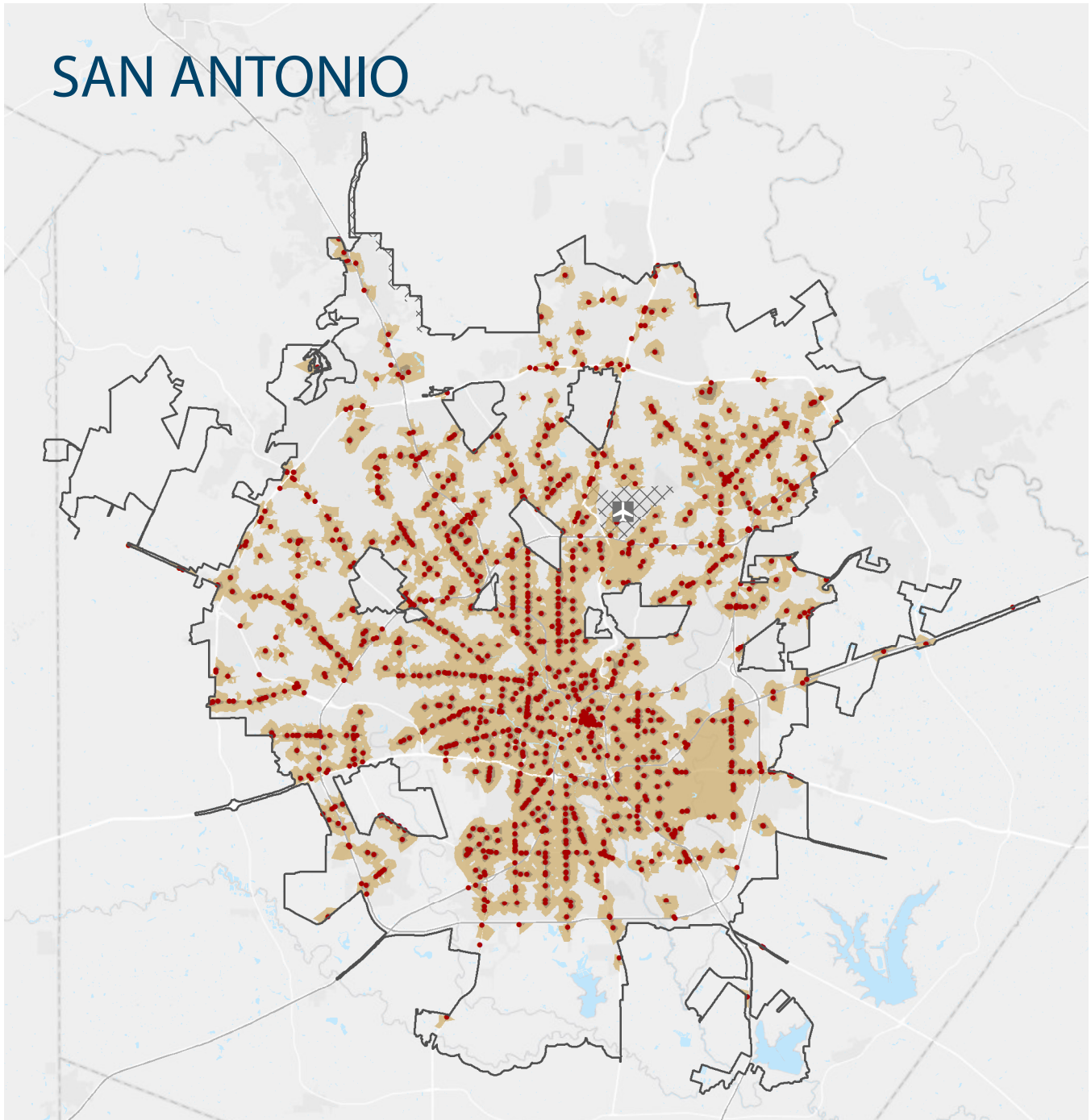


SAN ANTONIO



● Tobacco retailer

Proximity to tobacco retailer

■ Within 1,000 feet

■ Within 1/2 mile

▨ Tracts with no population

— Primary roads

Tobacco swamps are areas with a glut of tobacco retailers.

- 14% of residents live within 1,000 feet of a tobacco retailer
- 55% of residents live within 1/2 mile (~10-minute walk)

Esri, HERE, Garmin, (c) OpenStreetMap contributors, and the GIS user community

About these data: State licensing identified cigarette and tobacco retailers (State of Texas, Comptroller of Public Accounts, Aug, 2019). Proximity calculated as roadway distance. Percent of population within 1,000 feet and 1/2 mile of a tobacco retailer calculated as the percent of each census tract covered by the buffer, multiplied by the tract population, and summed across all tracts within the city boundary. Calculation assumes uniform distribution of population over census tracts. Advancing Science & Practice in the Retail Environment (ASPIRE, aspirecenter.org) is funded by the National Cancer Institute #P01-CA225597.

