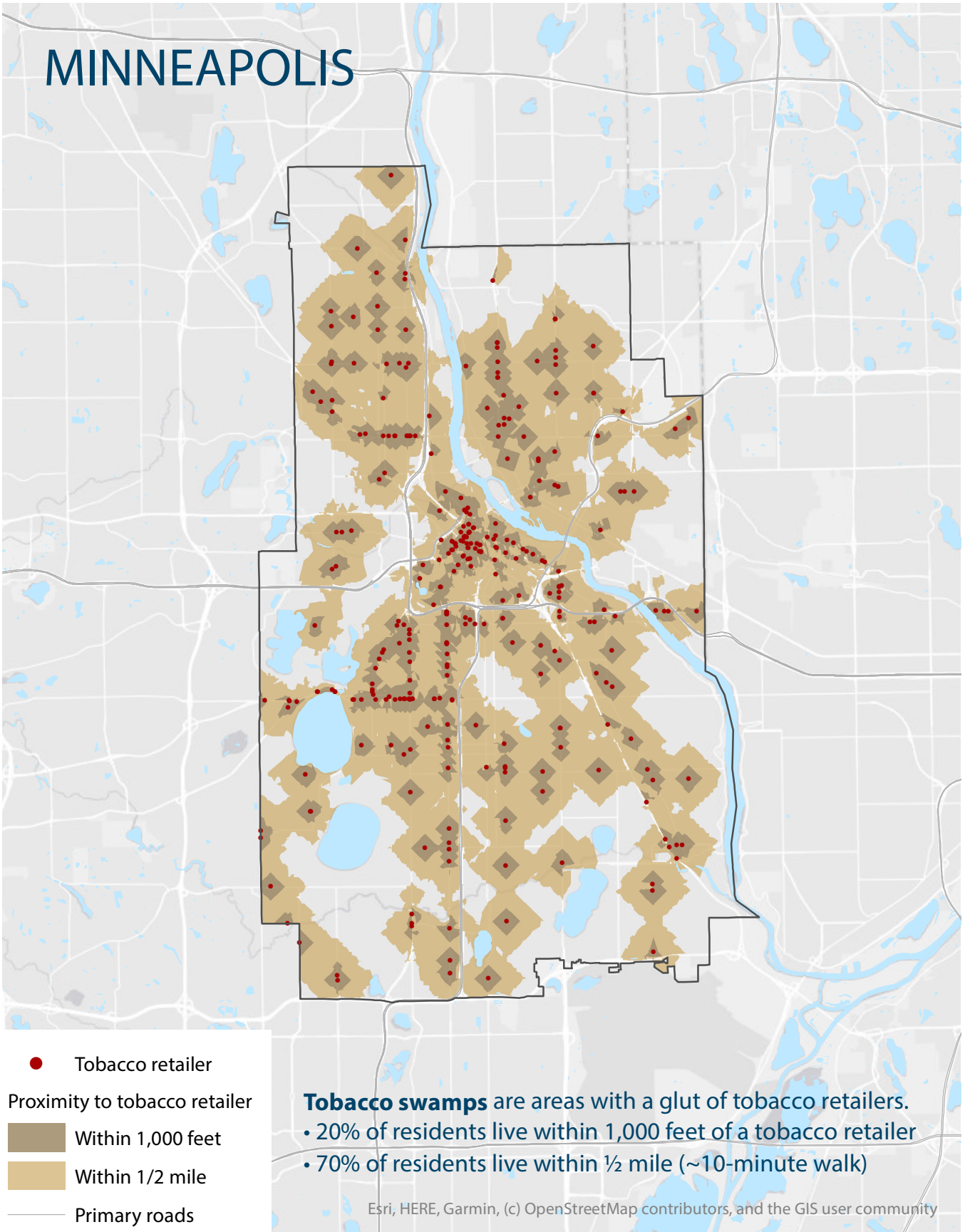


# MINNEAPOLIS



About these data: Tobacco retailers identified from a local licensing list (City of Minneapolis Health Dept, Aug, 2019). Proximity calculated as roadway distance. Percent of population within 1,000 feet and 1/2 mile of a tobacco retailer calculated as the percent of each census tract covered by the buffer, multiplied by the tract population, and summed across all tracts within the city boundary. Calculation assumes uniform distribution of population over census tracts. Advancing Science & Practice in the Retail Environment (ASPIRE, [aspirecenter.org](http://aspirecenter.org)) is funded by the National Cancer Institute #P01-CA225597.

